

# Proposed LBC management arrangements in response to the consultation

N.B. posts highlighted as blue subject to separate review

Posts highlighted as yellow paid for by NHS

*Directorates*

*Chief Executive  
(HoPS, RO)*

*Corporate  
Director  
Resources  
(S151 &  
Deputy CEO)*

*Corporate  
Director  
Children,  
Young People  
& Education  
(DCS &  
Calidcott  
Guardian)*

*Corporate  
Director  
Adult Social  
Care & Health  
(DASS &  
Calidcott  
Guardian)*

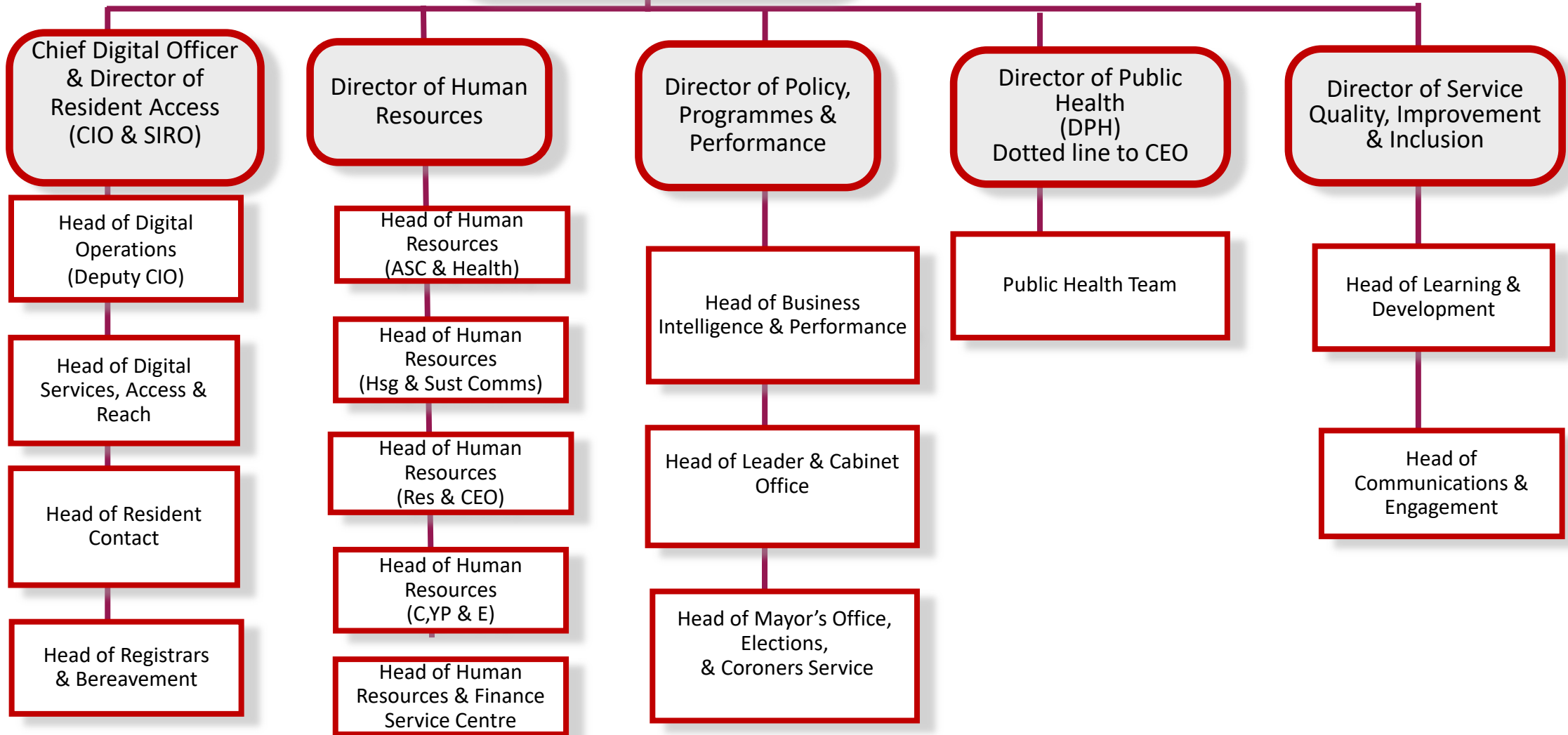
*Corporate  
Director  
Housing*

*Corporate  
Director  
Sustainable  
Communities,  
Regeneration &  
Economic  
Recovery*

*Assistant  
Chief  
Executive*

*Assistant Chief Executive Directorate*

Assistant Chief Executive



*Resources Directorate*

Corporate Director Resources (S151 & Deputy Chief Executive)

Internal Audit service

Director of Finance (Deputy S151)

Head of Pensions

Director of Commercial Investment & Capital

Director of Legal Services (MO)  
Dotted line to CEO

Head of Finance (Housing & Sustain Croydon)

Head of Finance (Adult Social Care & Health)

Head of Insurance, Anti-Fraud & Risk

Head of Finance (Resources & ACE)

Head of Finance (C, YP & E)

Head of Estates, Asset Management & Facilities

Head of Legal Services Social Care & Education Law (Deputy MO)

Head of Finance (Corporate & Treasury Management)

Head of Legal Services Litigation & Corporate Law (DPO & Deputy MO)

Head of Payments, Revenues, Benefits & Debt

Head of Capital Delivery

Head of Legal Services Commercial & Property Law

Head of Democratic Services & Scrutiny (Deputy MO)

*Adult Social Care & Health  
Directorate*

Corporate Director  
Adult Social Care & Health  
(DASS & Caldicott Guardian)

Director of Adult Social  
Care Operations  
(Deputy DASS)

Director of Adult  
Social Care Policy &  
Improvement

Head of Community  
Equipment Service

Head of Business & Service  
Compliance

Head of 18-65 Disability  
Services

Head of Provider  
Services

Head of Improvement

Head of Safeguarding  
& Quality Assurance

Head of Localities

Head of Integrated  
Contracts & Performance  
*(CCG Paid)*

Life Services  
*(CCG Paid)*

Principal Social Worker  
& Head of Adult  
Mental Health &  
Substance Misuse

Deputy Director  
One Croydon PMO  
*(CCG paid)*

*Children, Young People & Education Directorate*

Corporate Director  
Children, Young People & Education  
(DCS & Caldicott Guardian)

Director of Children's  
Social Care

Principal Social Worker &  
Head of Clinical Practice &  
Workforce Development

Head of Advice Support &  
Intervention, YOS and  
Adolescent Services

Head of Social Work with  
Families & Children with  
Disabilities 0 -17 Services

Head of Social Work with  
Children Looked After &  
Care Leavers

Director of Education

Head of Commissioning &  
Services to Schools

Head of Access to  
Education

Head of Early Years, School  
Place Planning &  
Admissions

Head of 0-25 Special  
Educational Needs Service

Director of Quality,  
Policy & Performance  
Improvement  
(Deputy DCS)

Head of Child Protection &  
Review

Head of Performance and  
Business Intelligence

*Housing  
Directorate*

Corporate Director  
Housing

Director of Housing, -  
Estates and  
Improvement

Head of  
Policy & Performance

Director of Housing –  
Resident Engagement  
& Allocations

Head of Responsive  
Repairs, Planned  
Maintenance & Safety

Head of  
Allocations, Lettings &  
Income Collection

Head of Housing Service  
Planning & Delivery

Head of  
Homelessness &  
Assessments

Head of Tenancy &  
Resident Engagement

*Sustainable Communities,  
Regeneration & Economic  
Recovery  
Directorate*

Corporate Director  
Sustainable Communities,  
Regeneration &  
Economic Recovery

Director of Planning &  
Sustainable  
Regeneration

Director of  
Culture & Community  
Safety

Director of Sustainable  
Communities

Head of Spatial Planning

Head of  
Culture, Leisure & Libraries

Head of Environment  
Services & Sustainable  
Neighbourhoods

Head of Strategic  
Transport

Head of  
Music & Arts

Head of Highways &  
Parking Services

Head of Building Control

Head of Development  
Management

Head of Environmental  
Health, Trading  
Standards & Licensing

Head of Employment,  
Skills & Economic  
Development

Head of Growth &  
Regeneration

Violence Reduction Network

Head of Independent  
Travel



*Commissioning & Procurement staffing – under separate review that is intended to conclude at the go-live point of the new structure and the new versions of these posts will be assimilated into the structure at that time*

